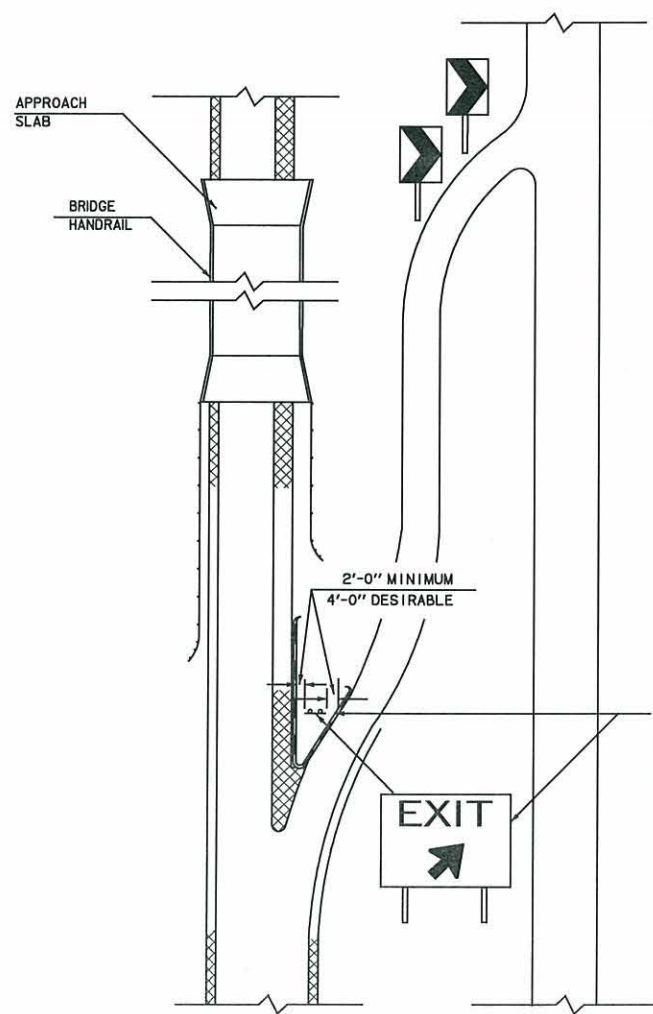


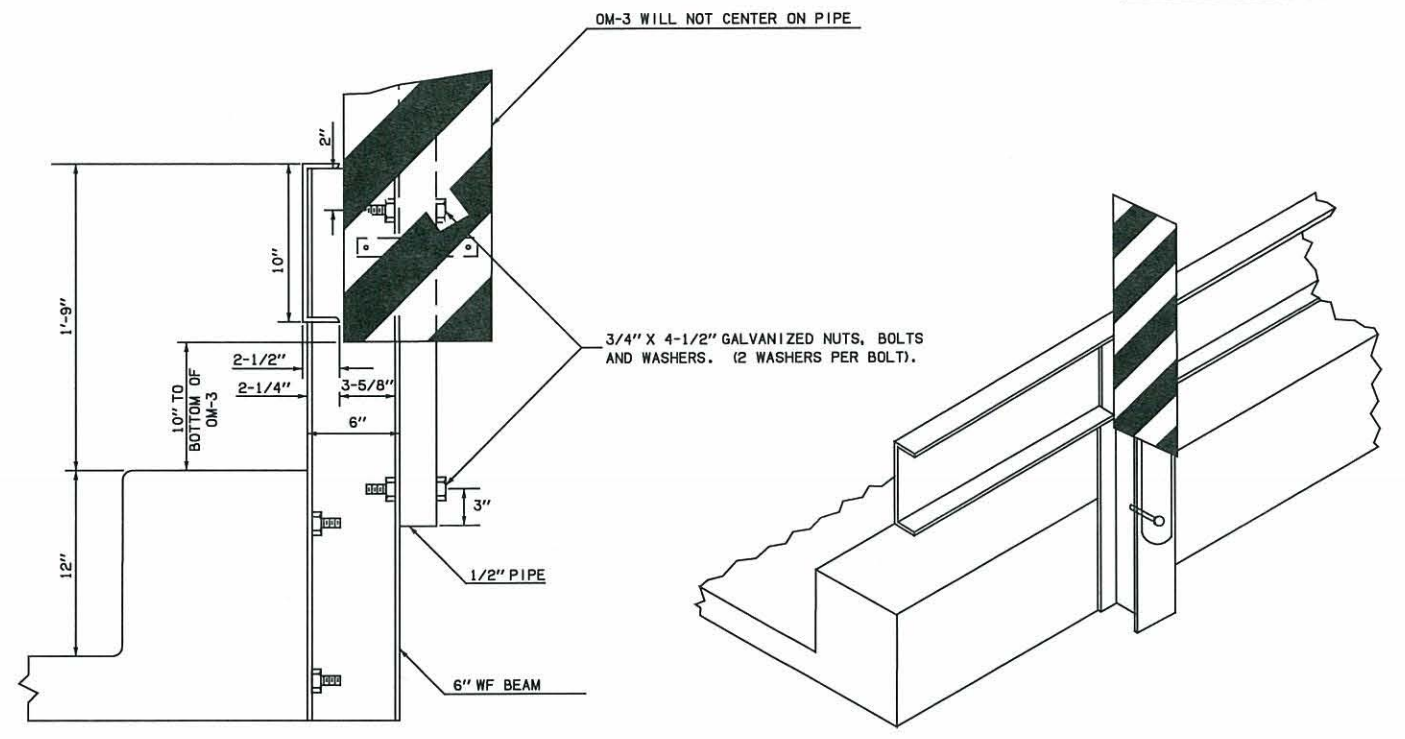
DESCRIPTION	REVISIONS	DATE



ALIGNMENT OF W1-8 MAY BE ADJUSTED FOR SIGHT DISTANCE DUE TO VERTICAL AND HORIZONTAL ALIGNMENT OF RAMP AT THE DISCRETION OF THE ENGINEER. USE ONLY WHEN SPECIFIED ON PLANS.

SIGNS MOUNTED IN GORE SHALL BE 2'-0" MINIMUM (4'-0" DESIRABLE) FROM THE EDGE OF SHOULDER OR NON-MOUNTABLE CURB. WHERE MOUNTABLE CURB WITH SHOULDER EXISTS THE SIGN SHALL BE 2'-0" MINIMUM (4'-0" DESIRABLE) FROM THE EDGE OF SHOULDER LINE.

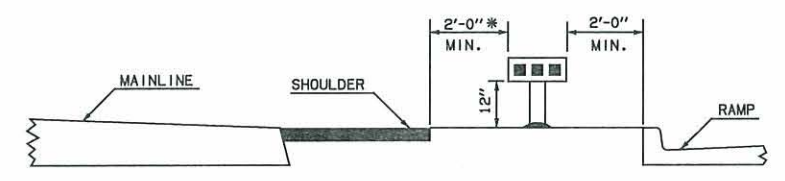
TYPICAL INSTALLATION OF:
"SIGN MOUNTED IN GORE"



"OM-3'S IN REGARD TO BRIDGES"

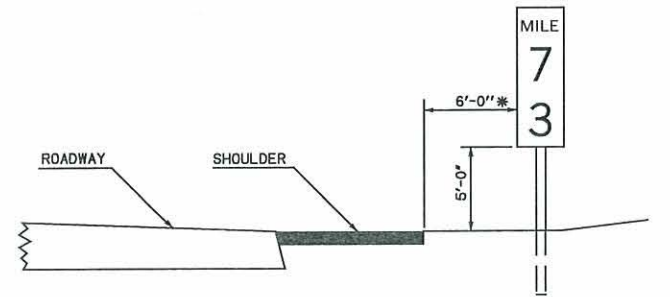
MOUNTING HEIGHT FOR OBJECT MARKERS
WHEN USED FOR MARKING OBJECTS 8'-0" OR LESS FROM THE SHOULDER OR CURB, THE MOUNTING HEIGHT SHOULD BE 4'-0" ABOVE NEAR TRAFFIC LANE. WHEN MORE THAN 8'-0" FROM THE SHOULDER OR CURB THE MOUNTING HEIGHT MAY BE 4'-0" ABOVE THE GROUND. THE MOUNTING HEIGHT MAY VARY AS TO NEED.

SPECIAL (TO BE USED ONLY WHEN SPECIFIED ON PROJECT.)
TYPICAL OM-3 INSTALLATION MOUNTED TO STEEL HANDRAIL

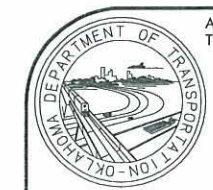


TYPICAL OM-2 INSTALLATION WHEN SPECIFIED ON PLANS

* FROM EDGE OF SHOULDER



TYPICAL D10-2F INSTALLATION



APPROVED BY TRAFFIC ENGINEER: *David Smart* DATE: 8/15/10

TRAFFIC STANDARD
TYPICAL INSTALLATION OF
GROUND MOUNTED SIGNS
AND OBJECT MARKERS